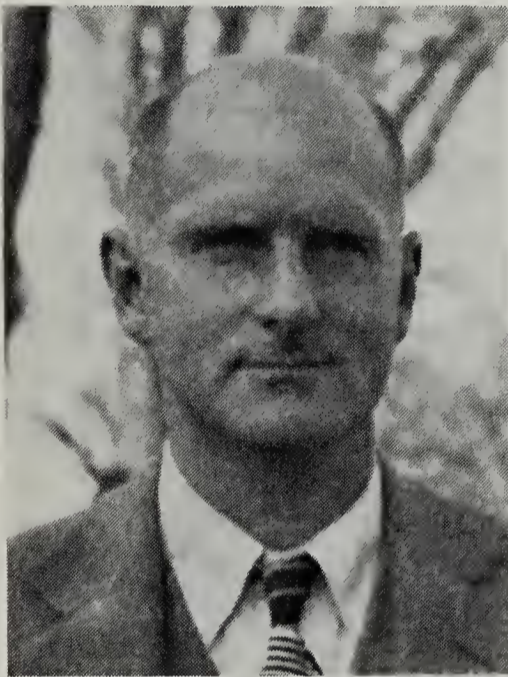


NECROLOGY & BIBLIOGRAPHY OF C. T. PARSONS

JOHN F. LAWRENCE

Mus. Comp. Zool., Harvard Univ., Cambridge, MA 02138

Dr. Carl T. Parsons was born at Rye, New York 30 Aug. 1914, and died at Dorset, Vermont, 30 Dec. 1973. He graduated from Harvard University in 1937, with a Ph.D. in 1941. He was a student of F. M. Carpenter with his thesis on Nearctic Nitidulidae. He is survived by his wife Harriet and sons Tom and William. He assisted Nathan Banks at the M.C.Z. for a short time



after getting his Ph.D. He was drafted into the Army in 1942 where he was in charge of Malaria Survey Unit in the Pacific and involved in the occupation of Korea and invasion of Okinawa. After discharge, he went to work for Connecticut Agricultural Experiment Station and wrote extension bulletins, helping in the editing of the "Diptera of Connecticut". He became a professor at the University of Vermont, from 1948 to 1955. He managed an apple orchard in Dorset, Vermont, until 1966, when he gave the business up and bought a bookstore in Manchester. In 1968 he sold the bookstore and retired to work on Coleoptera. Through the years, he worked on his large collection of nitidulids and other Coleoptera, and he identified thousands of specimens for individuals in various parts of the world.

His collection and library were bequeathed to the M.C.Z., except for a synoptic collection of Vermont insects, which went to the University of Vermont. He was particularly interested in the families Nitidulidae, Rhizophagidae, Cucujidae, Mycetophagidae, and Lagriidae, and he also worked in the dipteran family Conopidae. In addition to his collection of Vermont insects, he was building up a collection of insects from the islands of southern Massachusetts, and also insects associated with fungi.

BIBLIOGRAPHY

- 1936 Notes on North American Nitidulidae: *Pocadius*. Psyche 43:114-118.
 1938a Notes on North American Nitidulidae, II: *Cryptarcha* Shuckard. Psyche 45:96-100.
 1938b Notes on North American Nitidulidae, III: *Phenolia*, *Soronia*, *Lo-biopa*, *Amphotis*. Psyche 45:156-164.
 1939a A key to the New World *Amphicrossus* Erichson (Nitidulidae). Bull. Brooklyn Ent. Soc. 34:59-60.
 1939b A ptiliid beetle from Baltic Amber in the Museum of Comparative Zoology. Psyche 46:62-64.
 1940a The Conopidae of the West Indies and Bermuda (Diptera). Psyche 47:27-37, pl. 4.

- 1940b Observations in Cuba on insect mimicry and warning coloration. *Psyche* 47:1-7, pl. 1.
- 1943 A revision of Nearctic Nitidulidae (Coleoptera). *Bull. Mus. Comp. Zool.* 92:121-278, 13 pls.
- 1948 A classification of North American Conopidae. *Ann. Ent. Soc. Amer.* 41:223-246.
- 1949 Principles of bee pollination of apple trees. *Proc. Vermont State Horticultural Soc.* 1949:20-26.
- 1965 A key to North American *Statira* (Coleoptera: Lagriidae). *Psyche* 72:241-254.
- 1967 North American Nitidulidae (Coleoptera). IV. *Epuraea* associated with fungi of pine and oak. *Canadian Ent.* 99:734-737.
- 1969a A lathridiid beetle reported to bite man. *Coleopt. Bull.* 23:15.
- 1969b North American Nitidulidae (Coleoptera). V. Species of *Epuraea* related to *corticina* Erichson. *Coleopt. Bull.* 23:62-72.
- 1972 On the mesosternum in some Nitidulidae (Coleoptera), with a key to the New World *Amphicrossus*. *Coleopt. Bull.* 26:103-115.
- 1973 The Lagriidae of California (Coleoptera). *Pan-Pacific Ent.* 49:1-4.
- 1974 Two new species of *Eunausibius* (Coleoptera, Cucujidae) from Brazil. *Papeis Avulsos de Zoologia, Sao Paulo* 28:181-184.
- 1975 Revision of Nearctic Mycetophagidae (Coleoptera). *Coleopt. Bull.* 29(2):93-108.
- 1975 A key to Nearctic *Statira* and *Arthromacra* (Lagriidae). *Coleopt. Bull.* 29(4):211-226.

